



Beth Ann Parrish

April 25, 1952 - April 26, 2015

Beth Ann Parrish, age 63, of Versailles, passed away Sunday, April 26, 2015 at the University Hospital and Clinics in Columbia, Missouri. She was born April 25, 1952 in Wisconsin Rapids, Wisconsin, the daughter of Wallace and Betty (Koehn) Rabe.

Beth was a graduate of Watseka, Illinois High School and was employed as a production associate at the Gates Rubber Company in Versailles.

Surviving family members include her husband, Terry Parrish; her mother, Betty Rabe of Versailles; daughters, Tracy Easterly of Springfield, Missouri and Tina Milligan of Kansas City, Missouri; one sister, Rita Harrison of Otterville, Missouri and granddaughters, Madison and Macy Easterly of Versailles.

Funeral services will be held at 2:00 p.m., Friday, May 1st, at the Kidwell-Garber Funeral Home in Versailles. Graveside services and interment will follow in the Versailles Cemetery. The family will receive friends from 1:00 to 2:00 p.m., Friday, at the funeral home.

Expressions of sympathy may be left online at www.kidwellgarber.com

Memorial contributions may be made to: First Assembly of God Church-Children and Visually Impaired Ministries

Arrangements are under the direction and care of the Kidwell-Garber Funeral

Home of Versailles.

Cemetery Details

Versailles Cemetery

550 Clay Road
Versailles, MO 65084

Previous Events

Visitation

MAY 1. 1:00 PM (CT)

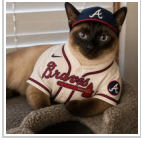
Kidwell-Garber Funeral Home - Versailles Chapel
207 North Monroe St.
Versailles, MO 65084
(573) 378-4655

Service

MAY 1. 2:00 PM (CT)

Kidwell-Garber Funeral Home - Versailles Chapel
207 North Monroe St.
Versailles, MO 65084
(573) 378-4655

Tribute Wall



“ Sorry for your loss. Sorry I'm very late posting this. Wish I would have been able to make it to funeral/visitation. Wish to be able to reconnect with Tina some day. Sorry for your loss Tina. Wish I was there for you during this time. God bless

Adam Howser - April 07, 2025 at 12:23 AM

NB

“ So sorry to hear that Beth passed away. I worked with her at Gates Rubber & really enjoyed seeing her sweet smile & was always so friendly to everyone.
Our prayers are with the family & friends, she will be missed so much.

Nancy Byars - May 01, 2015 at 07:15 AM

CC

“ Beth Ann was a classmate of mine in Crescent City and a distant cousin. My condolences to her family. She had a kind and quiet spirit.

Connie Caldwell - April 30, 2015 at 08:57 PM

CC

My maiden name was Bruniga.

Connie Caldwell - April 30, 2015 at 08:58 PM

NW

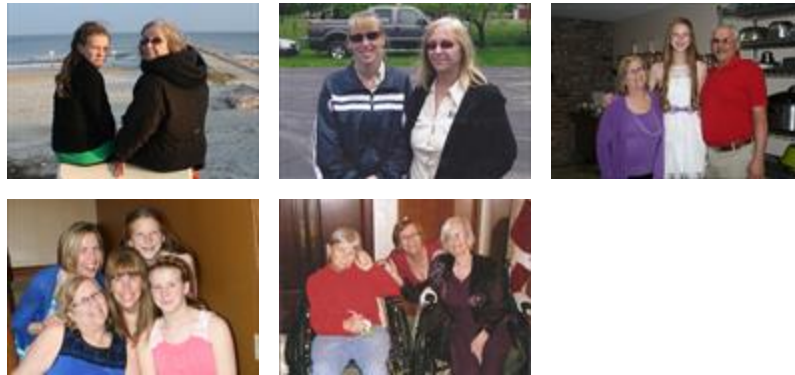
“ *I'm sorry for your loss, she will be missed.*



Nicky Wheeler - April 30, 2015 at 03:53 PM

TM

“ *5 files added to the album Family Photos*



Tina Milligan - April 30, 2015 at 02:56 PM

TW

“ *My prayers are with your family. I worked with Beth at Gates some years ago when I lived in Versailles and saw each other when I was in town.*

I will miss her.

Tracey Wheeler

Tracey Wheeler - April 30, 2015 at 08:26 AM

GP

“ My condolences to Beth's family. Beth and I were classmates back in Watseka, IL.
So sorry to hear of her passing.

Georgia (Grove) Potts - April 29, 2015 at 10:25 PM

KW

“ Our thoughts and continuous prayers are with your dear family.

Kathy & Mark Kelley, along w/Pat Weible - April 29, 2015 at 07:25 AM

KJ

“ Our deepest sympathy to Tracy, Tina and Terry. It is so very hard to lose someone so loved and at such an early age. Our thoughts and prayers are with the entire family during this most difficult time.



Kevin & Dena Jenkins - April 28, 2015 at 06:30 PM

PM

“ With deepest sympathy



Paige Meyer - April 28, 2015 at 06:01 PM



You are in our prayers at this difficult time. Beth loved you, her family, very much and she will be missed greatly by you and everyone in her life. I always enjoyed sitting and talking, as moms do, and I will miss her friendship. The rest of the family sends their love, too. Remember your last weekend as you celebrated her birthday, with a smile. She knew she was loved.

Teresa Milligan - April 30, 2015 at 11:29 AM